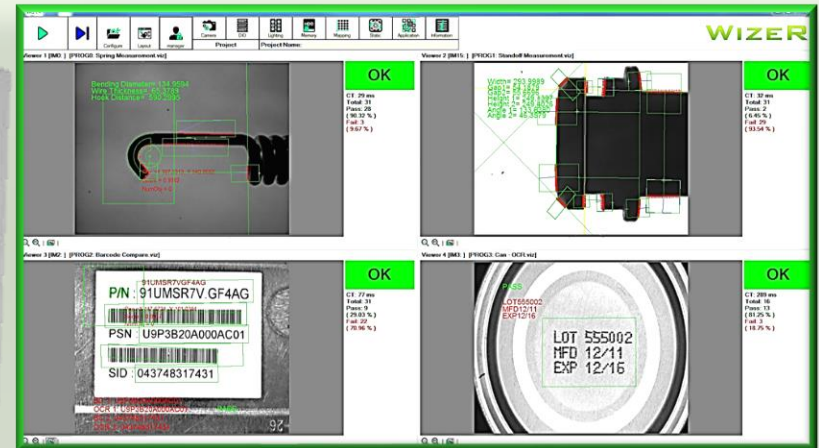
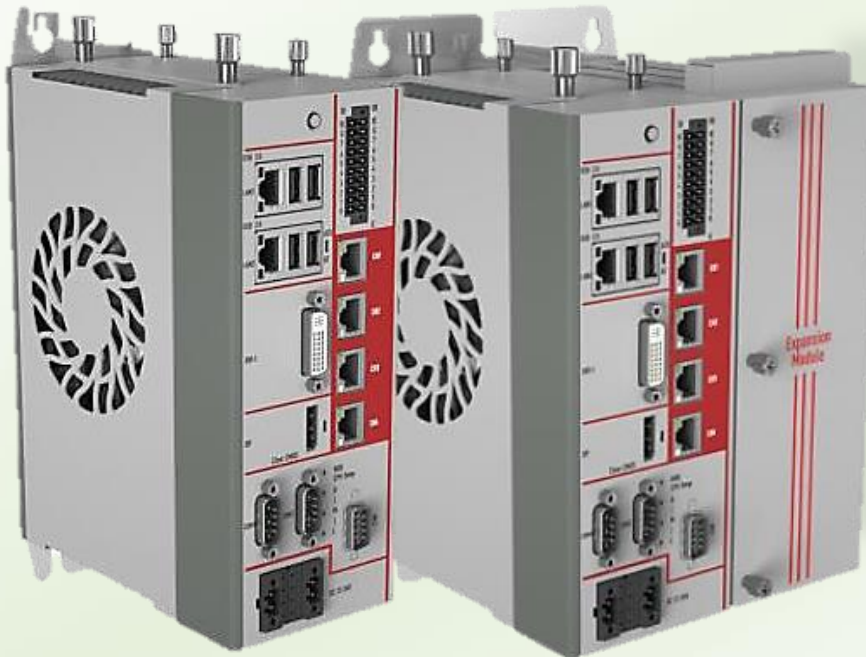


THE EVOLUTION OF MACHINE VISION SYSTEMS



ControlX-7000G Series

High-Speed, Compact Embedded Controller For Machine Vision Application

VISION CONTROLLER SELECTABLE FOR YOUR VISION APPLICATION



**High Performance
Machine Vision Controller**

	CX7500G	CX7700G
System Core		
CPU	Intel® Core™ KAL-S i5-7500	Intel® Core™ KAL-S i7-7700
Memory	8GB RAM	
Storage	128G mSATA (SSD)	
Operating System		
OS	Windows 10 IoT Ent (64bit)	
Graphic		
Display	1 x DVI, 1 x Display Ports (DP)	
Camera Interface		
GigE	4-CH Gigabit (POE)	
I/O		
Ethernet	2 x GbE ports	
DI/O	8 DI (NPN), 8 DO	
USB	4 x USB3.0 + 1 x USB2.0 internal	
Serial	2 x RS-232/422/485	
Power Supply		
DC	12~24V DC, 6A, 120W	
Physical		
Dimension	220 x 151 x 81mm (W x H x D)	
Weight	~3KG	
Certification/EMC	CE/FCC Class B	



A SMARTER CHOICE FOR YOUR MACHINE VISION NEEDS

VISION CONTROLLER EXPANSION MODULE

High Performance Machine Vision Controller

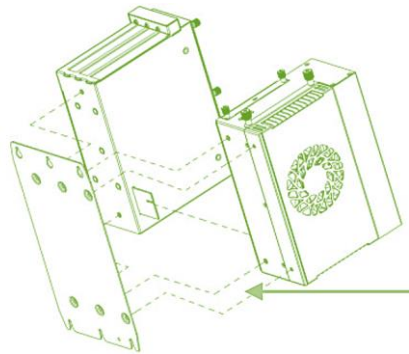
This Expansion module; VZ-E3S and ControlX-7000G series are designed with easy assembly, which are very suitable for Machine Vision application for more than 4 cameras inspection.

The expansion module consists of 1 x PCIe X4 slot and 2 x 32bit PCI. An additional PCIe GigE card (*without POE features*) can plug in the PCIe X4 slot to allow more cameras connection.

The dimension with CX-7000G & VZ-E3S is 220 x 151 x 151mm (W x H x D) , weighing 4.4KG.



Expansion module; VG3SE



Easy & flexible installation



A SMARTER CHOICE FOR YOUR MACHINE VISION NEEDS

Contact us

Corporate Headquarter (Singapore)

Inspiraz Technology Pte Ltd

Blk 19, Kallang Avenue, #06-163

Singapore 339410

Website: www.vizcam.net

Tel: +65 6297 0880

Email: sales@inspiraz.com

China Headquarter (Shanghai)

启毅视觉科技（上海）有限公司

上海市静安区梅园路228号（企业广场

）2618室

网址: www.inspiraz.cn

Tel: +86-021-52990181

Email: sales@inspiraz.cn

China Office (Shenzhen)

深圳市南山区海德一道佳嘉豪苑

Email: sales@inspiraz.cn

Korea Office (Seoul)

#1109, B Building 201 SongPa-Gu,

Seoul, Korea 05854

Tel: +82-2-2264-2563~5

Email: sales@vizcam.co.kr